

## Weather Observing

Overtaken by Technology  
but has it replaced the  
Human Touch.



# Coastline and County of Mayo

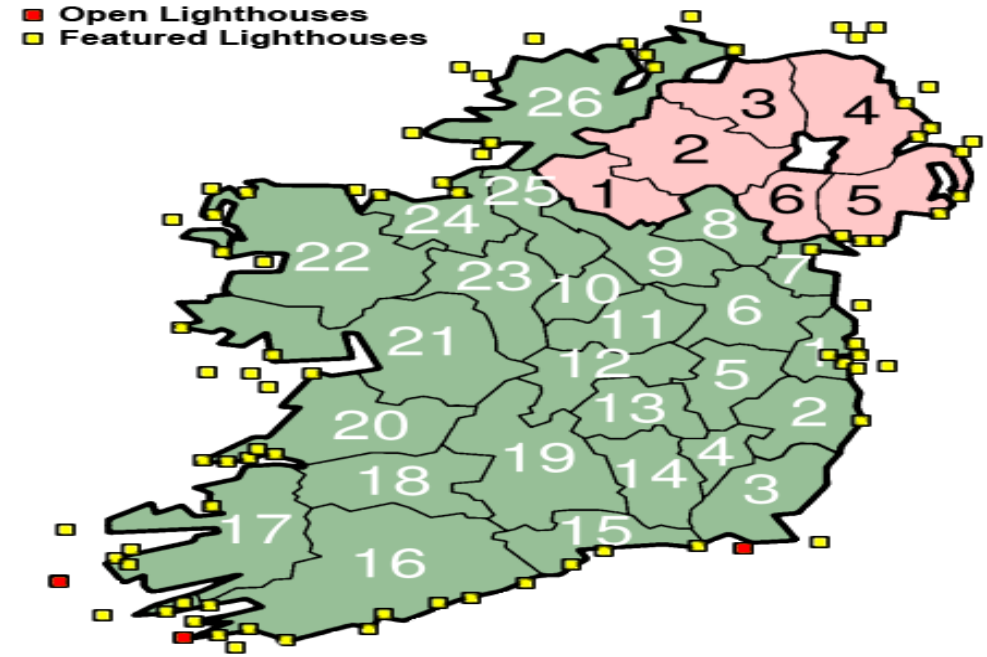
- 1167 KM
- Weather observers down the Years
- 20 Coastguard Stations 1823 – 1923
- Average staff: 6 men

## Weather important Coastguard Stations

1. Claggan Island 1884
2. Blacksod Point
3. Elly Bay
4. Ballyglass

## Lighthouses: Average staff: 6 men (3 person rotation)

1. Clare Island 1806
2. Inishgort, Clew Bay 1927
3. Broadhaven
4. Eagle Island (East and West)
5. Blackrock
6. Blacksod



## Met Offices

1. Belmullet 1956 – 2011 (50 Staff)
2. Claremorris 1943 – 1996 (56 staff)
3. Knock Airport 1996 – (20 staff)

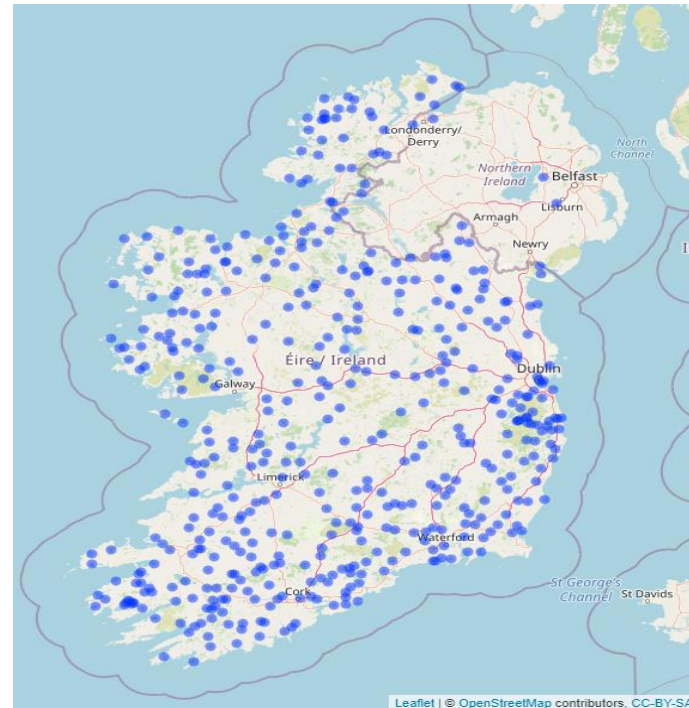
## Climate Stations

1. Belacorrick Power Station
2. Creagh, Ballinrobe
3. Newport
4. Straide

## Rainfall Stations 1904 –

Twenty nine in Service today

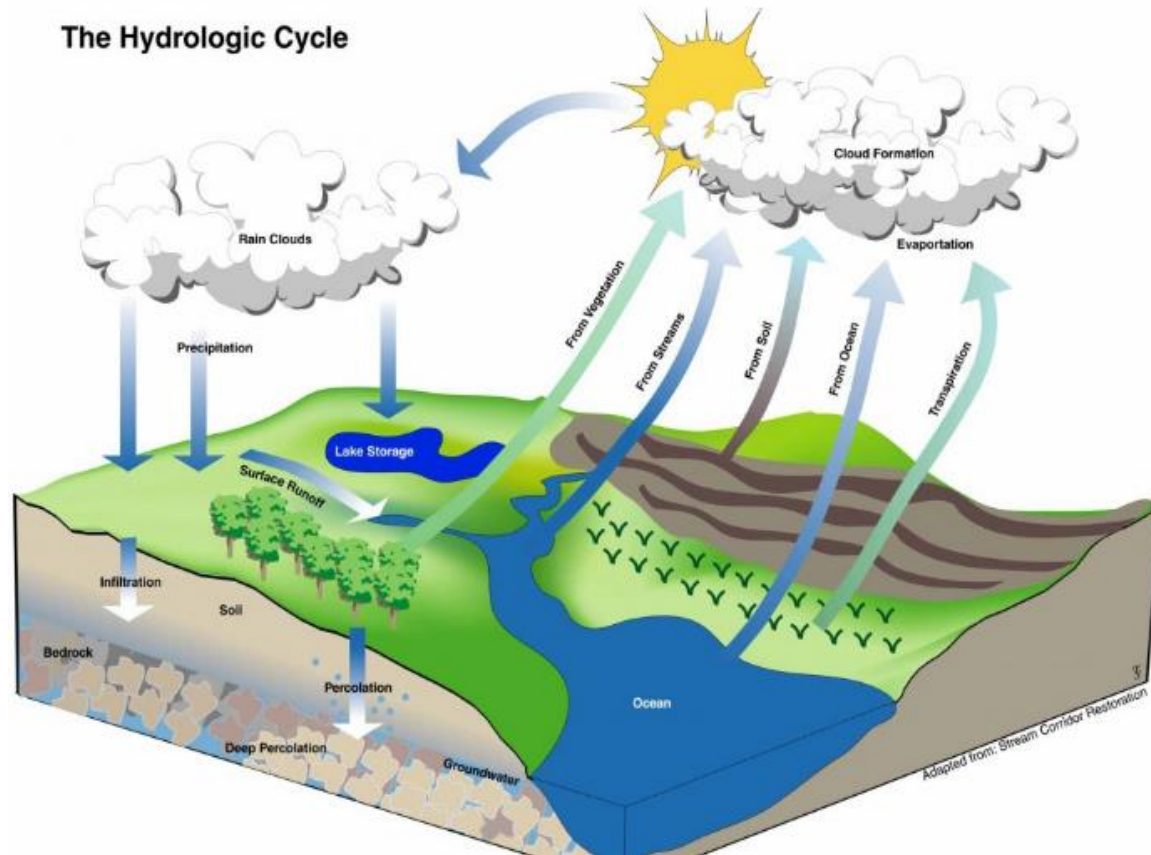
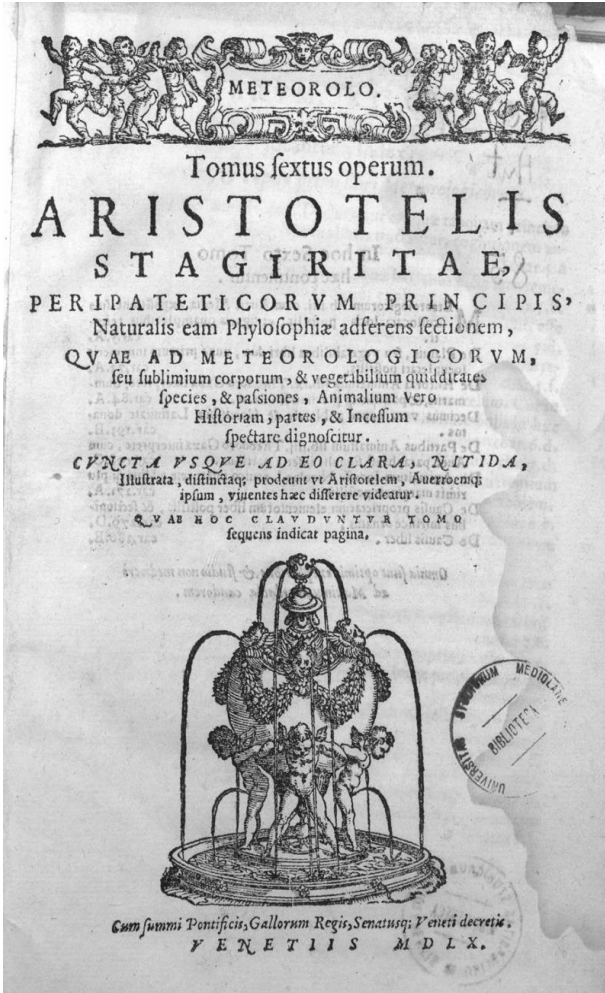
1. Westport House
2. Delphi Lodge
3. Castlebar Rectory
4. Castlemacgarrett, Claremorris
5. Ashleagh Falls, Leenaun





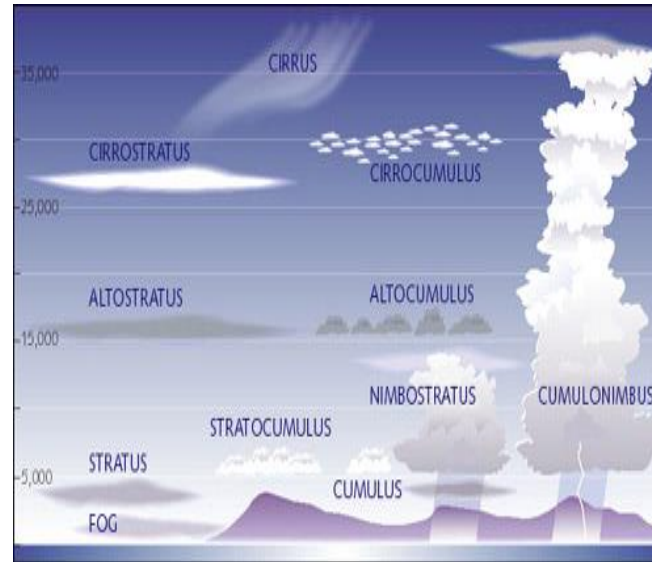
In 350 BC Aristotle wrote three books on Meteorology. Aristotle is considered the founder of meteorology.

One of the most impressive achievements described in the Meteorologica is the description of what is now known as the hydrologic cycle.



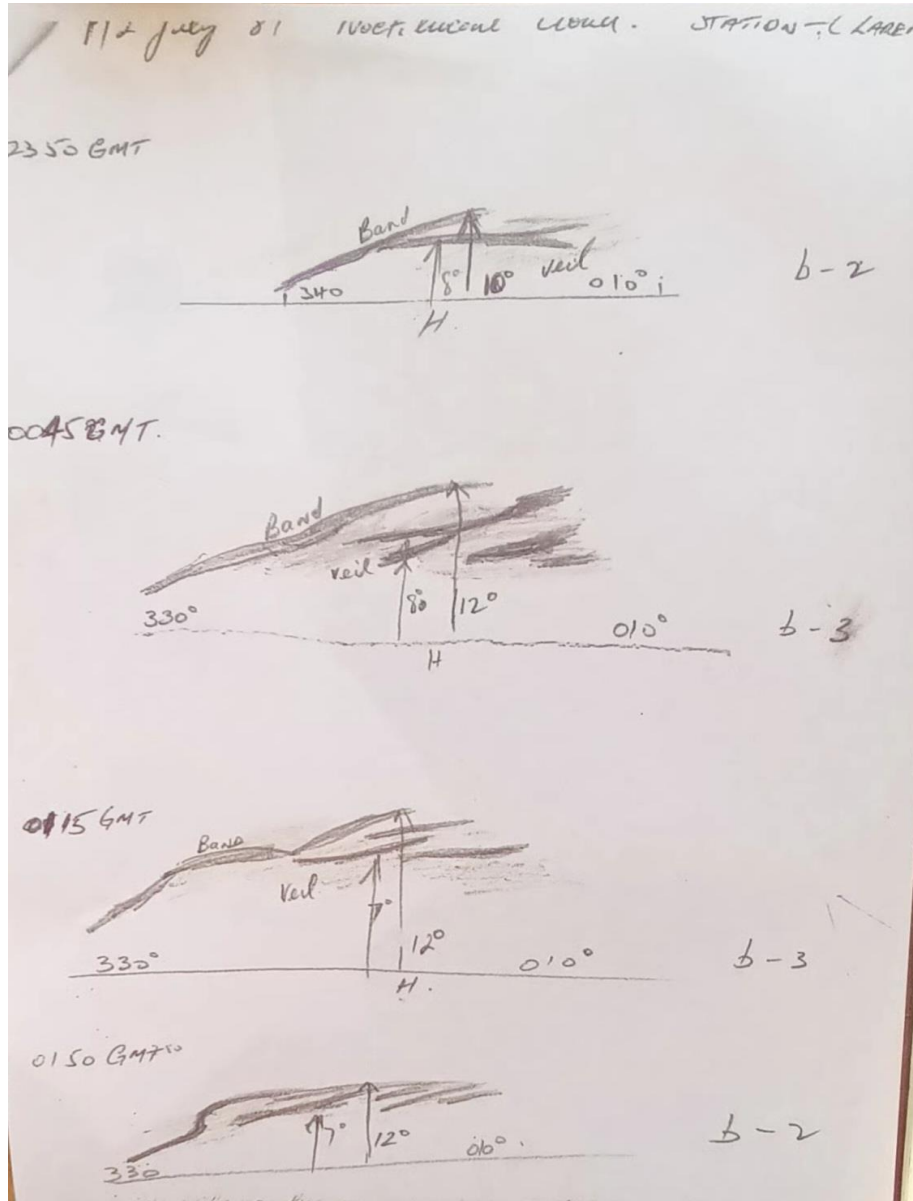
# Luke Howard 1772–1864

- One of the founding father's of Meteorology
- 1803: *Essay on the Modification of Clouds*
- In it he named the three principal categories of clouds – Cumulus, Stratus, and Cirrus,
- He identified the importance of clouds in meteorology.





# Aurora and Noctilucent Cloud Observations



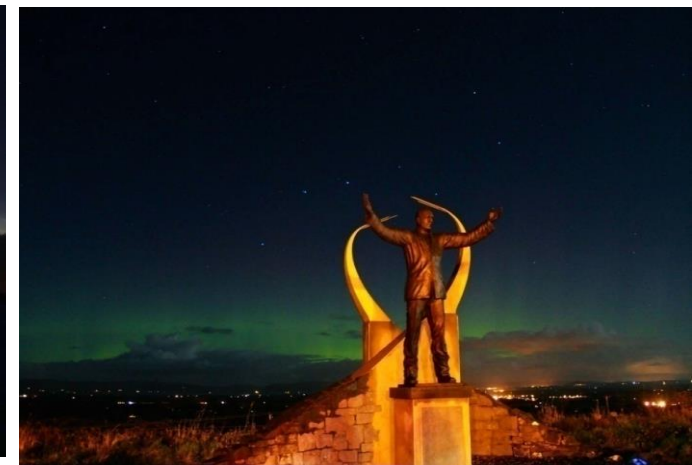
Aurora from Easkey March 17<sup>th</sup> 2015



Aurora to the north of Knock Airport 2016



Bright Noctilucent Cloud display over Lough Corrib in July 2017



Aurora to the north of Knock Airport 2017

•Rear Admiral Sir Francis Beaufort 1774 – 1857

•Born in Navan on 27 May 1774

•1810: The Admiralty gave Beaufort his first ship command, HMS *Woolwich*

•Alexander Dalrymple's wind drawings



Beaufort grade	Kind of wind	Knots		km/h		Effects		Height of waves (metre)
		Min	Max	Min	Max	Earth	Sea	
0	Calm	<1		<1		Smoke rises vertical	Flat sea	-
1	Very light	1	3	1	5	The wind bends smoke	Small ripples with no white foamy crests.	0.1
2	Light breeze	4	6	6	11	It can be felt on face	Small wavelets, with unbroken crests.	0.2 - 0.3
3	Gentle breeze	7	10	12	19	It shakes leaves	Very small crests; crests begin to break.	0.6 - 1
4	Moderate breeze	11	16	20	28	It lifts dust and papers	Small waves that begin to grow longer; spuma più frequente e più evidente.	1 - 1.5
5	Fresh breeze	17	21	29	38	It shakes branches	Moderate waves that grow longer in shape; possible spray.	2 - 2.5
6	Strong breeze	22	27	39	49	It shakes big branches	Bigger waves; white foamy crests are longer everywhere.	3 - 4
7	Near gale	28	33	50	61	It impedes walking	The sea swells up; white foam forms when waves break up.	4 - 5.5
8	Gale	34	40	62	74	It shakes big trees	Medium-high, longer waves; crests start to break up in sprays.	5.5 - 7.5
9	Strong gale	41	47	75	88	Chimney pots and slated removed	High waves; tight strips of foam form in the direction of the wind.	7 - 10
10	Storm	48	55	89	102	It uproots trees	Very high waves with long crests; the sea looks completely white; waves fall down violently, visibility is reduced.	9 - 12.5
11	Violent storm	56	63	103	117	Serious devastation	Exceptionally high waves (small and medium tonnage ships disappear for a few seconds); visibility is still more reduced.	11.5 - 16
12	Hurricane	>64		>118		Very serious catastrophes	Air is filled with foam and sprays; sea is completely white because of foam; visibility is greatly reduced.	>14

BEAUFORT NUMBER	WIND	SYMBOL	WIND SPEED (MPH)
0	calm	○	less than 1
1	light air	○ —	1-3
2	slight breeze	○ —	4-7
3	gentle breeze	○ —	8-12
4	moderate breeze	○ —	13-18
5	fresh breeze	○ —	19-24
6	strong breeze	○ —	25-31
7	moderate gale	○ —	32-38
8	fresh gale	○ —	39-46
9	strong gale	○ —	47-54
10	whole gale	○ —	55-63
11	storm	○ —	64-75
12	hurricane	○ —	more than 75



# Foundations of Meteorology in the British Isles

**1854** International Congress of Meteorology.

This congress agreed to an initiative to transmit meteorological intelligence via telegraph lines.

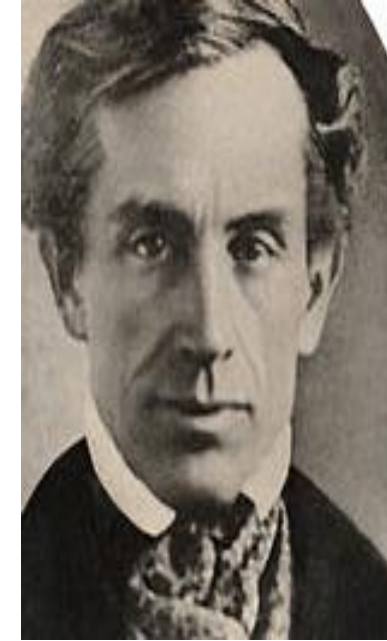
**Samuel Finley Breese Morse** (1791–1872) was an American painter and inventor.

Developed a recording electric telegraph in 1837. Morse and his assistant developed the Morse code signalling alphabet.

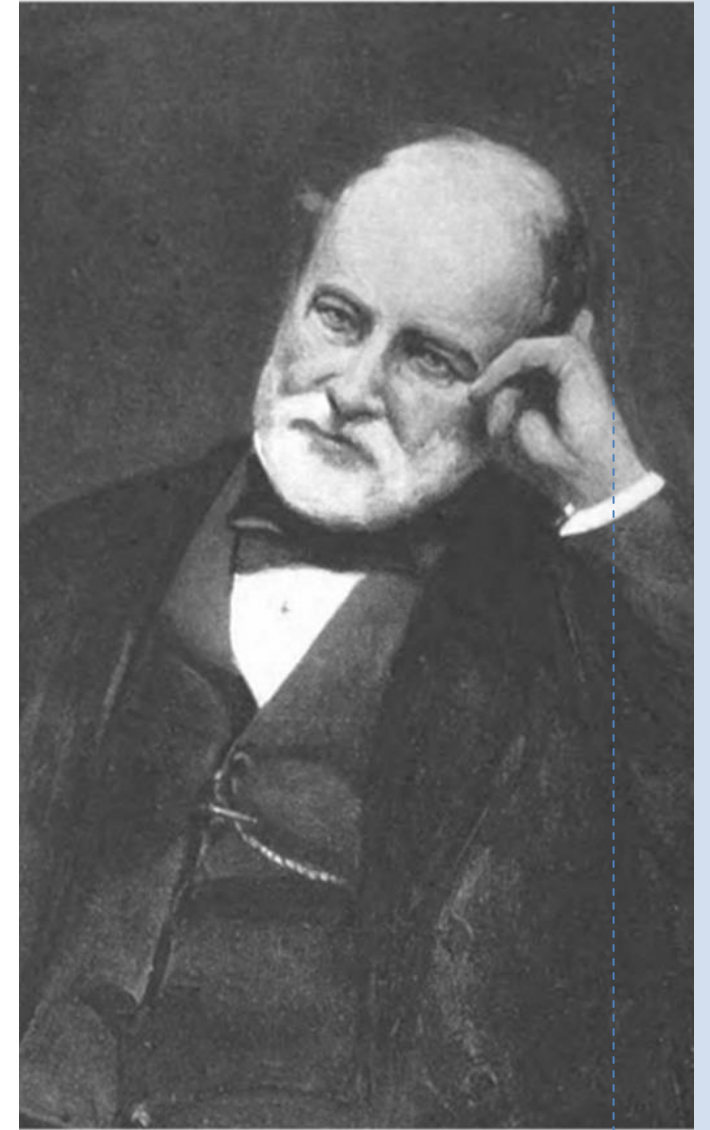
## International Morse Code

1. The length of a dot is one unit.
2. A dash is three units.
3. The space between parts of the same letter is one unit.
4. The space between letters is three units.
5. The space between words is seven units.

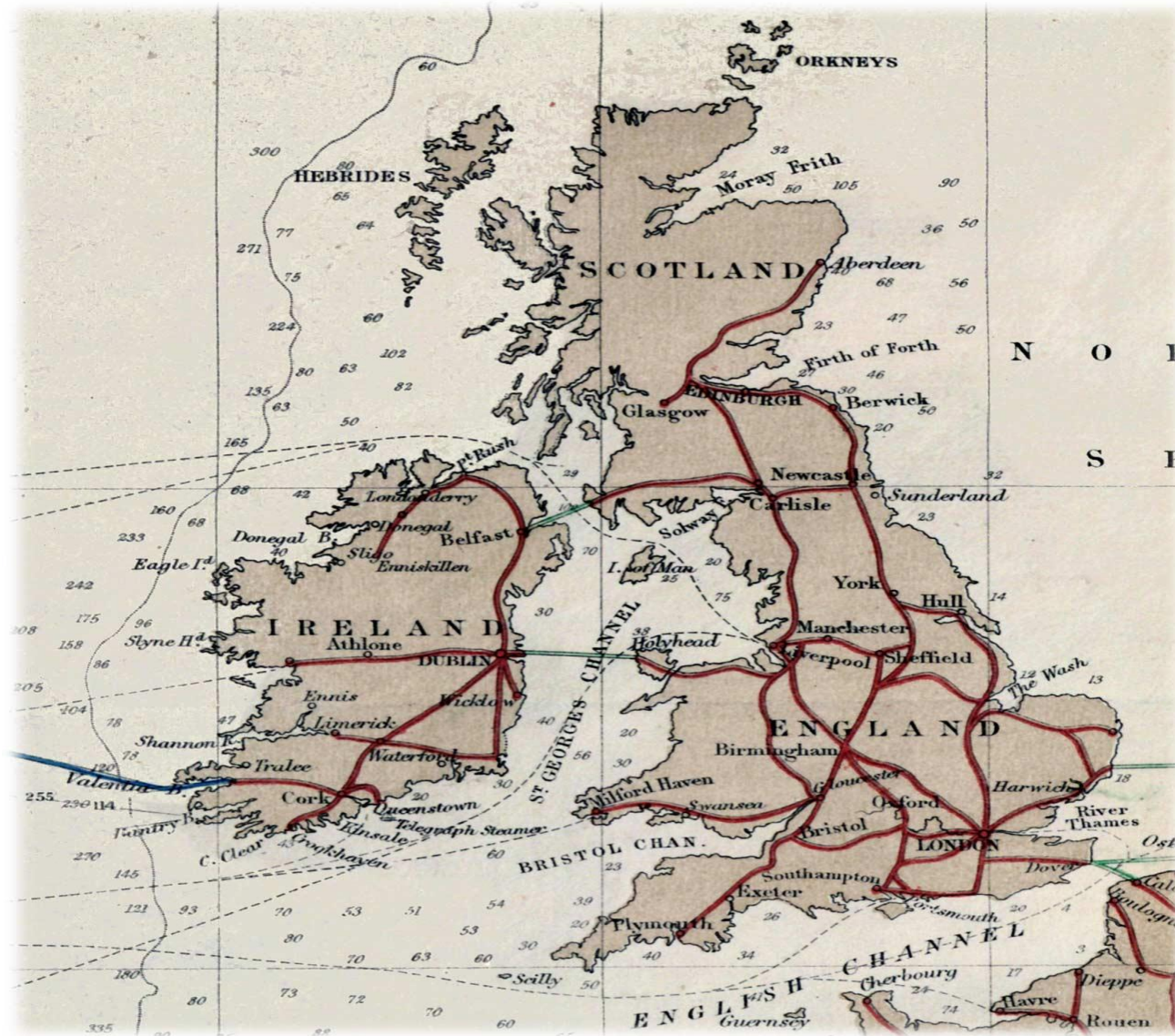
A	• —	U	• • —
B	••• —	V	•• — —
C	• — — •	W	• — — —
D	• — ••	X	• — • —
E	•	Y	• — — — •
F	•• — •	Z	• — — ••
G	• — — —		
H	••••		
I	••		
J	• — — — —		
K	• — • — —	1	• — — — —
L	• — • — •	2	•• — — — —
M	— — •	3	••• — — —
N	— — ••	4	•••• — —
O	— — — •	5	•••••
P	• — — — •	6	• — — ••
Q	• — — — —	7	• — — •••
R	• — • — —	8	• — — ••••
S	•••	9	• — — •••••
T	— — —	0	• — — — —



- Commander Mathew Maury. U S Navy... main organiser of Brussels conference 1853
- Admiral Fitzroy...appointed head of Met Office 1858.



# Telegraph Network



**Morse Code  
Telegraph  
Network  
British Isles  
Connecting  
Ireland to  
England  
1858**

July 31<sup>st</sup>  
8 to 9 A.M.

WEATHER REPORT. 1861.

Wednesday	B.	E.	M.	D.	F.	C.	I.	S.
Nairn	29.54	57	56	WSW	6	9	0	3
Aberdeen	29.60	59	54	SSW	5	1	6	3
Leith	29.70	61	55	W	3	5	c	2
Berwick	29.69	59	55	WSW	4	4	c	2
Ardrossan	29.73	57	55	W	5	4	c	5
Portrush	29.72	57	54	SW	2	2	6	2
Shields	29.80	59	54	WSW	4	5	0	3
Galway	29.83	65	62	W	5	4	c	4
Scarborough	29.86	59	56	W	3	6	c	2
Liverpool	29.91	61	56	SW	2	8	c	2
Valentia	29.87	62	60	SW	2	5	0	3
Queenstown	29.88	61	59	W	3	5	c	2
Yarmouth	30.05	61	59	W	5	2	c	3
London	30.02	62	56	SW	3	2	6	—
Dover	30.04	70	64	SW	3	7	0	2
Portsmouth	30.01	61	59	W	3	6	0	2
Portland	30.03	63	59	SW	3	2	c	3
Plymouth	30.00	62	59	W	5	1	6	4
Penzance	30.04	61	60	SW	2	6	c	3

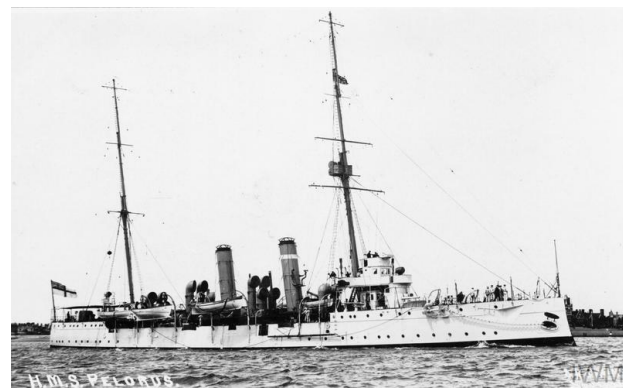
*General*  
 Weather probable next two days or two in the  
 North Moderate West by wind - fine  
 West Moderate South westerly - fine  
 South Fresh - West by - fine

EXPLANATION.

B.—Barometer corrected and reduced to 32° at mean sea level: each ten feet, of vertical rise, causing about one hundredth of an inch *diminution*; and each ten degrees, above 32°, causing nearly three hundredths *increase*. E.—Exposed thermometer in shade. M.—Moistened bulb (for evaporation and dew point). D.—Direction of wind (true—two points *left* of magnetic). F.—Force (1 to 12—estimated). C.—Cloud (1 to 9). I.—Initials: b.—blue sky; c.—clouds (detached); f.—fog; h.—hail; l.—lightning; m.—misty (hazy); o.—overcast (dull); r.—rain; s.—snow; t.—thunder. S.—Sea-disturbance (1 to 9).

*It is submitted that the above may be advantageously added: and, if approved, will be continued to Globe.*

- Weather reports from stations around Ireland and the UK for 31<sup>st</sup> July 1861.
- They include reports from Portrush, Galway, Valentia and Queenstown (Cobh).
- The reports give the air pressure, temperature, wind direction and force (Beaufort), cloud cover, etc.





Belmullet Coastguard Station Claggan Island Co-Mayo



For Telegraphic Reporting Stations only.

METEOROLOGICAL OBSERVATIONS, taken at

Bismillah during

1884

by Mary J. Lane

Barometer, No. 595 at 40 ft. above Mean Sea Level.

Height of rim of Rain Gauge { Above Ground M.S.L.

Table with columns for DAY OF MONTH, BAROM., THERMOM., WIND, EXTREME FORCE, RAIN-FALL, SEA DISTURBANCE, and REMARKS. Rows contain numerical data for each day from 1 to 31.

TOTALS

4 0 56 \* 75

297 53 53 SW 3 4 \*

2971 53 53 WSW 2 3 \*

For 9 June 3 P.M.

# DAILY WEATHER REPORT

for Wednesday 1<sup>st</sup> OCTOBER 1884.

Issued by the Meteorological Office, 116, Victoria Street London. R. H. SCOTT, Secretary.

STATIONS.	† YESTERDAY EVENING.					8 A.M. TO-DAY.										PAST 24 HOURS.		
	Baromet at 3 P. M. and Sea Level.	Temp. in Shade.	WIND.		Weather.	BAROMETER.		SHADE TEMP.			WIND.		Weather.	Dir. (0 to 8).	SHADE TEMP.		Amount of Rainfall.	
			Dir.	Force (0 to 12)		Reading at 8 A.M. and Sea Level.	Difference from 8 A.M. yesterday.	Dry.	Wet.	Difference from 8 A.M. yesterday.	Dir.	Force (0 to 12)			Max.	Min.		
Loughborough...	29.56	53	SSW	2	c	29.93	- 15	58	51	+ 14	HEAV	4	bc	4	61	59	0.02	
* Ardrossan ...	29.68	52	S	9	r	29.68	- 15	49	47	- 5	WNW	4	bc	3	57	42	0.19	
* Mullaghmore ...	29.62	52	W SW	6	cp	29.97	+ 12	49	45	- 5	WNW	6	bc	6	56	49	0.30	
Donaghadee ...	29.77	63	SSW	7	r	29.91	- 17	45	42	- 7	WNW	4	b	2	57	42	0.12	
Parsonstown ...	29.77	65	SW	1	r	30.07	+ 11	44	43	- 6	SW	1	b	3	57	42	0.14	
Barrow-in-Furness	29.97	56	S	6	c	29.97	- 12	57	46	- 1	NW	4	c	6	53	51	0.05	
* Holyhead ...	29.89	57	SSW	7	ow	29.91	- 10	57	46	- 4	W	5	b	5	53	49	0.12	
Liverpool (Bidston)	29.97	55	S	3	c	29.97	- 10	58	45	+ 1	W	5	bc	5	61	49	0.12	
* Valencia ...	29.82	65	W SW	4	cm	30.06	+ 19	55	48	- 4	WNW	3	c	4	58	47	0.12	
Roche's Point ..	29.87	56	SW	7	r	30.06	- 11	58	48	- 6	WNW	2	bc	3	59	47	0.08	
Belmullet	29.60	54	W	7	b	29.92	?	50	47	?	WNW	3	b	0	56	50	0.79	

## EXPLANATION OF COLUMNS.

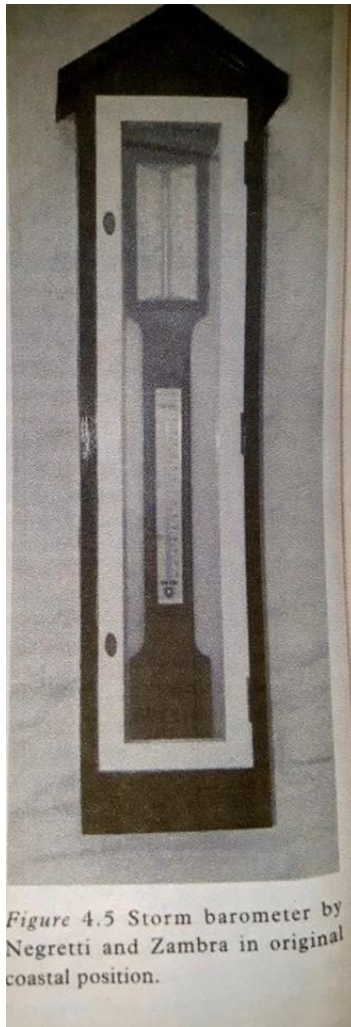
**WEATHER.**—*Beaufort Scale* is b, blue sky; c, detached clouds; d, drizzling rain; f, fog; g, dark, gloomy; h, hail; l, lightning; m, misty (hazy); o, overcast; p, passing showers; q, squally; r, rain; s, snow; t, thunder; u, ugly, threatening; v, visibility, unusual transparency; w, dew.

\* AN ASTERISK is inserted in all places for which information is not usually received.

† The evening observations are taken at 8 p.m. in France and our Islands with the exception of Oxford, where they are taken at 8 p.m. In Sweden, Norway, and Denmark, the observations are taken at 8 p.m. (Christiania time).

‡ These Stations send Reports at 2 p.m. daily (Sundays excepted).





**Ballyglass Coastguard Station.** This building stood on the Western side of Broadhaven Bay and was occupied until 28th August, 1920, when the personnel were evacuated by a British destroyer. On the following day the station was burned by Republican forces to prevent it being re-occupied. Nothing of the building remains to-day. The original of this photo is in the possession of Mr. Jack Barrett, Knockshanbo.

- Storm Barometer No.226, Ballyglass, Belmullet
- 26 June 1893



Instruments				Island				Remarks							
No. of Instrument	Date	Agency	Date	Ship	Date	Agency	Remarks	No. of Instrument	Date	Agency	Date	Ship	Date	Agency	Remarks
200	91.2.9	-R.O.	91.2.29	Torres	91.2.2	N.O.	at 2.4.18 91.2.2.2	201	91.2.9	-R.O.	91.2.9	St. George			
	91.2.10	---	91.2.21	St. George	91.2.2	N.O.	at 2.4.18 91.2.2.2		91.2.10	-R.O.	91.2.10	St. George			
	91.2.11	---	91.2.21	St. George	91.2.2	N.O.	at 2.4.18 91.2.2.2		91.2.11	-R.O.	91.2.11	St. George			
201	91.2.9	-R.O.	91.2.10	St. George	91.2.10	-R.O.	91.2.21 St. George	202	91.2.9	-R.O.	91.2.9	St. George			
	91.2.10	---	91.2.10	St. George	91.2.10	-R.O.	91.2.21 St. George		91.2.10	-R.O.	91.2.10	St. George			
	91.2.11	---	91.2.11	St. George	91.2.11	-R.O.	91.2.21 St. George		91.2.11	-R.O.	91.2.11	St. George			
202	91.2.2	-R.O.	91.2.9	St. George	91.2.9	N.O.	at 2.4.18 91.2.2.2	203	91.2.9	-R.O.	91.2.9	St. George			
	91.2.10	---	91.2.10	St. George	91.2.10	-R.O.	at 2.4.18 91.2.2.2		91.2.10	-R.O.	91.2.10	St. George			
203	91.2.2	-R.O.	91.2.10	St. George	91.2.10	-R.O.	at 2.4.18 91.2.2.2	204	91.2.9	-R.O.	91.2.9	St. George			
	91.2.11	---	91.2.11	St. George	91.2.11	-R.O.	at 2.4.18 91.2.2.2		91.2.11	-R.O.	91.2.11	St. George			
204	91.2.2	-R.O.	91.2.15	St. George	91.2.15	-R.O.	at 2.4.18 91.2.2.2	205	91.2.9	-R.O.	91.2.9	St. George			
	91.2.10	---	91.2.15	St. George	91.2.15	-R.O.	at 2.4.18 91.2.2.2		91.2.10	-R.O.	91.2.10	St. George			
205	91.2.2	-R.O.	91.2.15	St. George	91.2.15	-R.O.	at 2.4.18 91.2.2.2	206	91.2.9	-R.O.	91.2.9	St. George			
	91.2.10	---	91.2.15	St. George	91.2.15	-R.O.	at 2.4.18 91.2.2.2		91.2.10	-R.O.	91.2.10	St. George			
206	91.2.2	-R.O.	91.2.15	St. George	91.2.15	-R.O.	at 2.4.18 91.2.2.2	207	91.2.9	-R.O.	91.2.9	St. George			
	91.2.10	---	91.2.15	St. George	91.2.15	-R.O.	at 2.4.18 91.2.2.2		91.2.10	-R.O.	91.2.10	St. George			
207	91.2.2	-R.O.	91.2.15	St. George	91.2.15	-R.O.	at 2.4.18 91.2.2.2	208	91.2.9	-R.O.	91.2.9	St. George			
	91.2.10	---	91.2.15	St. George	91.2.15	-R.O.	at 2.4.18 91.2.2.2		91.2.10	-R.O.	91.2.10	St. George			
208	91.2.2	-R.O.	91.2.15	St. George	91.2.15	-R.O.	at 2.4.18 91.2.2.2	209	91.2.9	-R.O.	91.2.9	St. George			
	91.2.10	---	91.2.15	St. George	91.2.15	-R.O.	at 2.4.18 91.2.2.2		91.2.10	-R.O.	91.2.10	St. George			

226 91.2.26 -R.O. 91.2.25 Ballyglass

Blacksod Point, Co. Mayo  
Joseph Hodge, Chief Boatman recorded  
the first weather observations on  
25 September 1899.

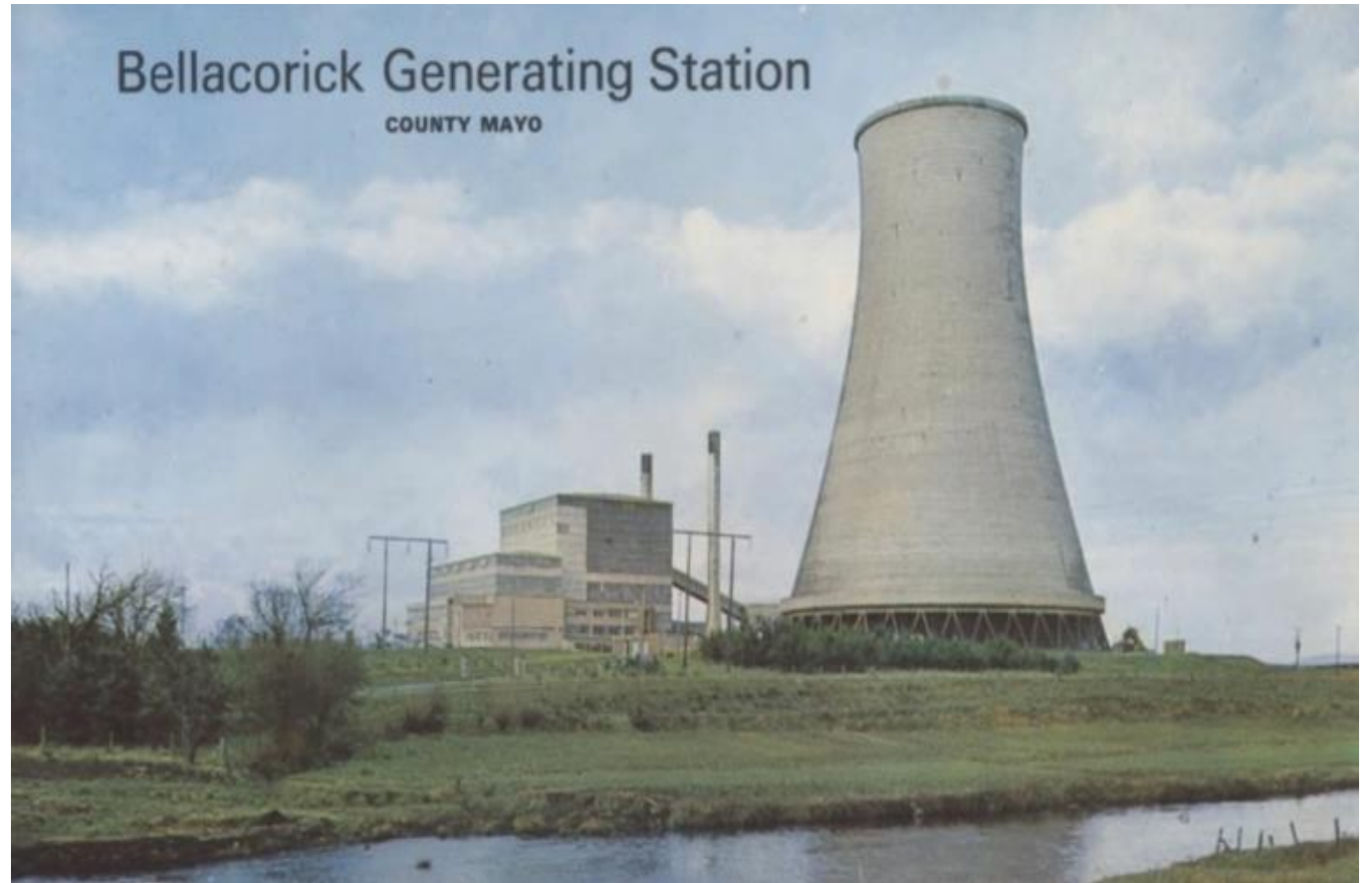
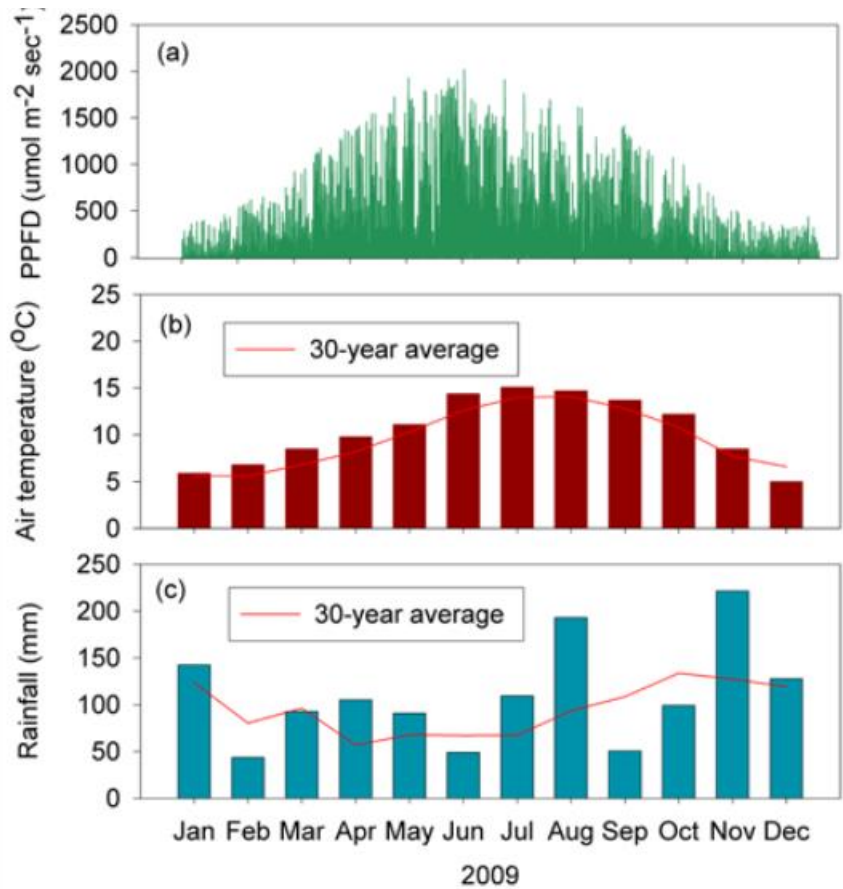


# DAILY WEATHER REPORT

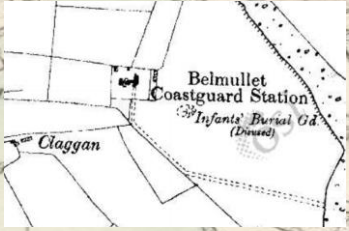
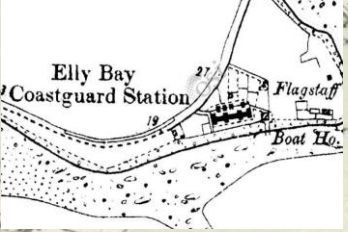
for 8 a.m. on *Monday, 9<sup>th</sup> October,* 1899.  
 Issued by the Meteorological Office, 63, Victoria Street, London. R. H. SCOTT, Secretary.

STATIONS.	YESTERDAY EVENING. (See note at bottom of last page.)						THIS MORNING. (See note at bottom of last page.)						PAST 24 HOURS								
	Barom.	Temp.	Wind.		Weather	Sea (0 to 9.)	Barometer.	Temperature.			Wind.		Weather	Hours of Bright Sunshine.	Temp.						
	At 82° and M.S.L.	Dry Bulb	Dirac.	Force (0 to 12.)			At 82° Fahr. and M. S. L.	Change since Yesterday.	Dry Bulb	Wet Bulb	Change since Yesterday.	Dirac.			Force (0 to 12.)	Max	Min	Rainfall.			
	Ins.	°			Ins.	Ins.	°	°	°						Ins.						
SCANDINAVIA.	Haparanda ...	30.22	25	Z	0	b	30.02	-00	37	36	+10	SW	4	bc	.	b	.	37	23	-	
	Hernösand ...	30.28	27	Z	0	b	30.02	-10	39	35	+5	S	4	c	.	b	.	39	25	-	
	Stockholm ...	30.32	35	NW	2	b	30.25	+16	35	32	0	SW	2	0	.	b	.	43	30	-	
	Wisby ...	30.32	41	N	6	b	30.32	+30	42	37	0	W	4	.	b	.	b	.	45	36	-
	Karlstad ...	30.34	36	NW	2	b	30.16	-08	42	41	+9	SW	4	.	b	.	b	.	.	.	-
	Bodo ...	29.92	37	E	2	0	29.51	-61	41	39	+10	SSW	4	r	2	0	.	41	30	0.12	
	Christiansund ...	30.09	44	NW	5	c	29.71	-62	49	45	+10	NSW	4	r	4	c	.	48	39	0.04	
	Skudesnaes ...	30.30	49	SW	6	0	30.17	-18	53	50	+15	SW	6	0	4	bc	.	53	38	.	
	Færder (X'ania Fjord)	30.30	47	SSW	4	b	30.17	-11	50	47	+9	SW	6	0	3	b	.	50	41	-	
	The Scau (Skagen)	30.37	45	NSW	2	b	30.26	-02	46	44	+8	NSW	4	0	1	b	.	46	43	-	
Fano ...	30.43	42	Z	0	b	30.38	+07	50	45	+7	W	3	c	.	b	.	54	41	-		
BRITISH ISLANDS.	Sumburgh Head ...	30.05	50	N	3	0	29.88	-32	50	50	+2	W	4	0	4	0	.	51	37	0.26	
	Stornoway ...	30.09	52	SW	4	0	29.89	-22	52	50	+3	SW	3	0	3	c.0	2.0	55	46	-	
	Wick ...	30.13	45	NW	1	c	30.01	-22	53	50	+4	NW	4	0	1	c	.	55	48	-	
	Nairn ...	30.18	52	W	2	c	30.07	-20	53	51	+4	W	2	0	2	c	.	59	46	-	
	Aberdeen ...	30.21	50	SW	2	bc	30.13	-19	53	49	+4	SSW	3	cw	1	bc	6.4	58	44	-	
	Leith ...	30.27	52	SW	2	bc	30.20	-14	50	47	+1	NSW	2	cm	.	bc	.	57	42	-	
	Shields ...	30.30	52	SSW	3	c	30.27	-09	42	41	-1	SW	2	m	2	c	.	55	40	-	
	Spurn Head ...	30.34	53	S	3	bc	30.33	-06	49	47	-2	SW	4	b	2	bc	.	57	45	-	
	Loughborough ...	30.38	46	ESE	1	b	30.36	-06	37	37	+1	ESE	1	fw	2	bc, ff	.	62	35	-	
	Malin Head ...	30.24	53	W	1	b	30.17	-14	49	48	+2	S	4	0	2	b	.	57	47	-	
BRITISH ISLANDS.	Blacksod Pt. ...	30.23	53	NSW	4	m	30.15	-14	53	50	+3	SW	3	m	4	m	.	57	45	-	
	Donaghadee ...	30.24	50	SSW	2	b	30.25	-13	45	44	+2	SSW	1	bc, w	2	b	.	58	41	-	
	Liverpool (Bids Looe)	30.35	50	SE	1	b	30.32	-08	46	43	+5	SE	1	b	?	f. b	.	57	41	-	
	Holyhead ...	30.32	53	SW	1	bm	30.29	-08	52	50	+7	SE	1	f	1	bm	.	57	43	-	
	Parsonstown ...	30.29	51	S	1	b	30.24	-12	44	43	+11	SE	1	0	.	b	9.5	58	32	-	
	Valencia ...	30.24	55	SE	4	bm	30.18	-13	57	53	+4	SE	4	cm	3	bm	9.0	60	42	-	
	Roche's Point ...	30.31	55	SSE	3	c	30.26	-10	55	52	+12	SSE	3	cw	3	f. e	.	60	43	-	
	Pembroke (St Ann's Hd.)	30.32	54	SE	2	b	30.27	-09	55	52	+8	SSE	3	cq	1	f. b	8.8	57	45	-	
	Scilly ...	30.27	56	E	3	0	30.24	-06	56	53	0	SSE	4	c	0	bc.0	7.4	59	52	-	
	Jersey (St Aubin's)	30.31	58	ESE	3	bc	30.31	-06	55	49	+2	E	3	bm	3	cm, bc	.	62	47	-	





Climate data for Bellacorick, Co. Mayo in 2009. (a) Photosynthetic photon flux density (PPFD;  $\mu\text{mol m}^{-2} \text{sec}^{-1}$ ), (b) monthly air temperature ( $^{\circ}\text{C}$ ) and (c) monthly rainfall (mm)







Form 7441 DEPARTMENT OF INDUSTRY AND COMMERCE, METEOROLOGICAL SERVICE  
 STATION WEATHER RECORD

(BB89) A. 87.45 WE. 4839—P. 789815 (50) (Rev. 1-14-44) A. T. 600, (Rev. 10-9-39)

INSTRUMENT	TIME MARKS G.M.T.	SCREEN TEMPERATURES READ AT G.M.T.	Wet bulb muslin last changed on <u>24th MAY</u> 194 <u>4</u>										STATION <u>SUN. day</u>	
Barograph	1203	1812	1253	TEMPERATURES °F						RAINFALL		SUN- SHINE Total for Day (SSS)		
Thermograph	1203	1812	1552	Read at G.M.T.	Max.	Min.	Grass Min. (T <sub>g</sub> T <sub>g</sub> )	After setting of Max., Min., and Grass Min.			mm		RR	
Hygograph	1203	1812	1752		Dry Bulb	Max.	Min.	Grass Min.						
Rain Recorder	-	1759	2153	0700										
Anemograph	-	1812		1800	57.0	47.5	-	73.2	50.3	53.3	59.2	0.3	0.6	2.0

Sheet No. \_\_\_\_\_

Hour G.M.T.	CLOUD					WEATHER		VISIBILITY		WIND		PRESSURE			TEMPERATURE °F		Humidity %	State of Sea (S)	NEPHOSCOPE				REMARKS	
	Forms			Amounts		Height of base in feet h	Since last report W	At time ww	Land V	Sea V <sub>s</sub>	Direction DD	Speed m.p.h. F	Barometer as read Aneroid	Attached Thermometer °A M.S.L. Pressure (PPP)	Change of Pressure app	Dry Bulb (TT)	Wet Bulb (t <sub>1</sub> t <sub>1</sub> )	By Hygrograph Calculated	State of ground (E)	Form of Cloud (C)	Time in secs. (tt)	Form of Cloud (C)		Time in secs. (tt)
	Low	Medium	High	Low	Total																			
1200	Sc	Ca	0	9+	9+	400	bc	bc	4	X	SWW	17	990.3	29.7	0.4	49.3	46.8	91	X					
1300	Sc	Ca	0	7	7	3	bc	bc	8	X	W	14	990.5	29.2	0.2	50.0	46.0	89	1					
1400	Sc	Ca	0	9+	9+	1100	bc	bc	7	X	WS	20	990.8	29.5	0.4	51.3	48.0	87	X					
1500	Sc	Ca	0	7	7	4	bc	bc	7	X	WS	5	991.7	29.9	2.0	51.3	48.0	89	X				Wind sample 1755	
1600	Sc	Ca	0	7	7	4	bc	bc	7	X	WS	6	992.7	30.0	2.0	51.6	49.6	85	X				Shower not in collection	
1700	Sc	Ca	0	7	7	4	bc	bc	7	X	WS	5	994.0	30.2	2.0	51.6	49.6	86	1					

Hour	III C <sub>L</sub> C <sub>M</sub>	wwVhN <sub>6</sub>	DDFWN	PPPT	UC <sub>Happ</sub>	e, f, t, SVs	RRT <sub>1</sub> E	T <sub>g</sub> T <sub>g</sub> T <sub>g</sub>	SSS	CddV <sub>1</sub> V <sub>1</sub>	CddV <sub>2</sub> V <sub>2</sub>	Checked by	Time Sent
1300	-	91792	62837	21467	99948	80202	015XX					Neph.	1310
1400	-	91790	25747	56587	99951	90202	013XX					Neph.	1611
1500	-	91780	02747	56587	10753	61006	050XX	16571	1147			Neph.	1811
1600	-	91790	25747	56587	02158	80202	020XX			020		Neph.	2212

FOR USE AT METEOROLOGICAL SERVICE HEADQUARTERS ONLY

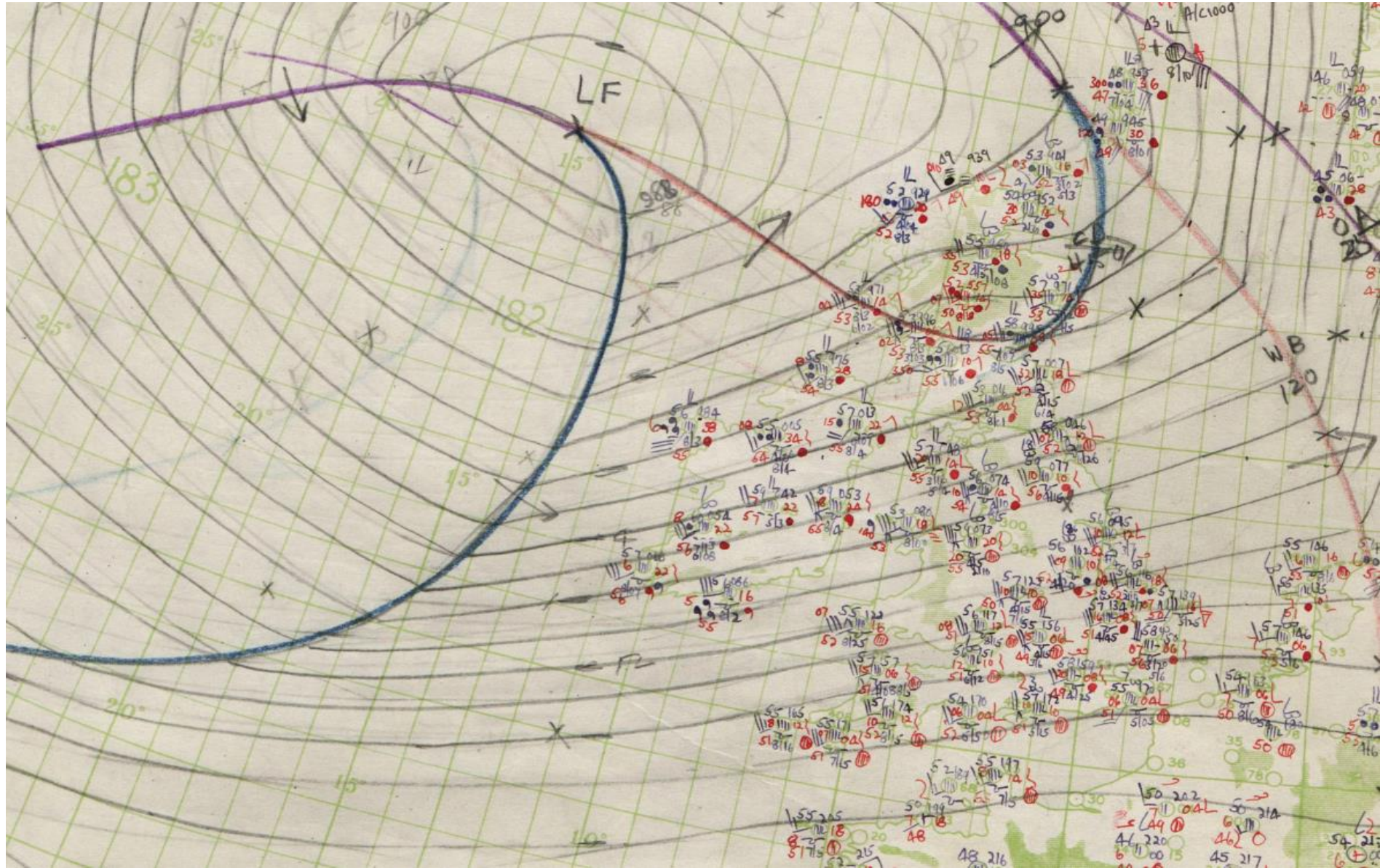
1	2	3	4	5

\*I certify that a legible carbon copy of this sheet has been filed at the station.

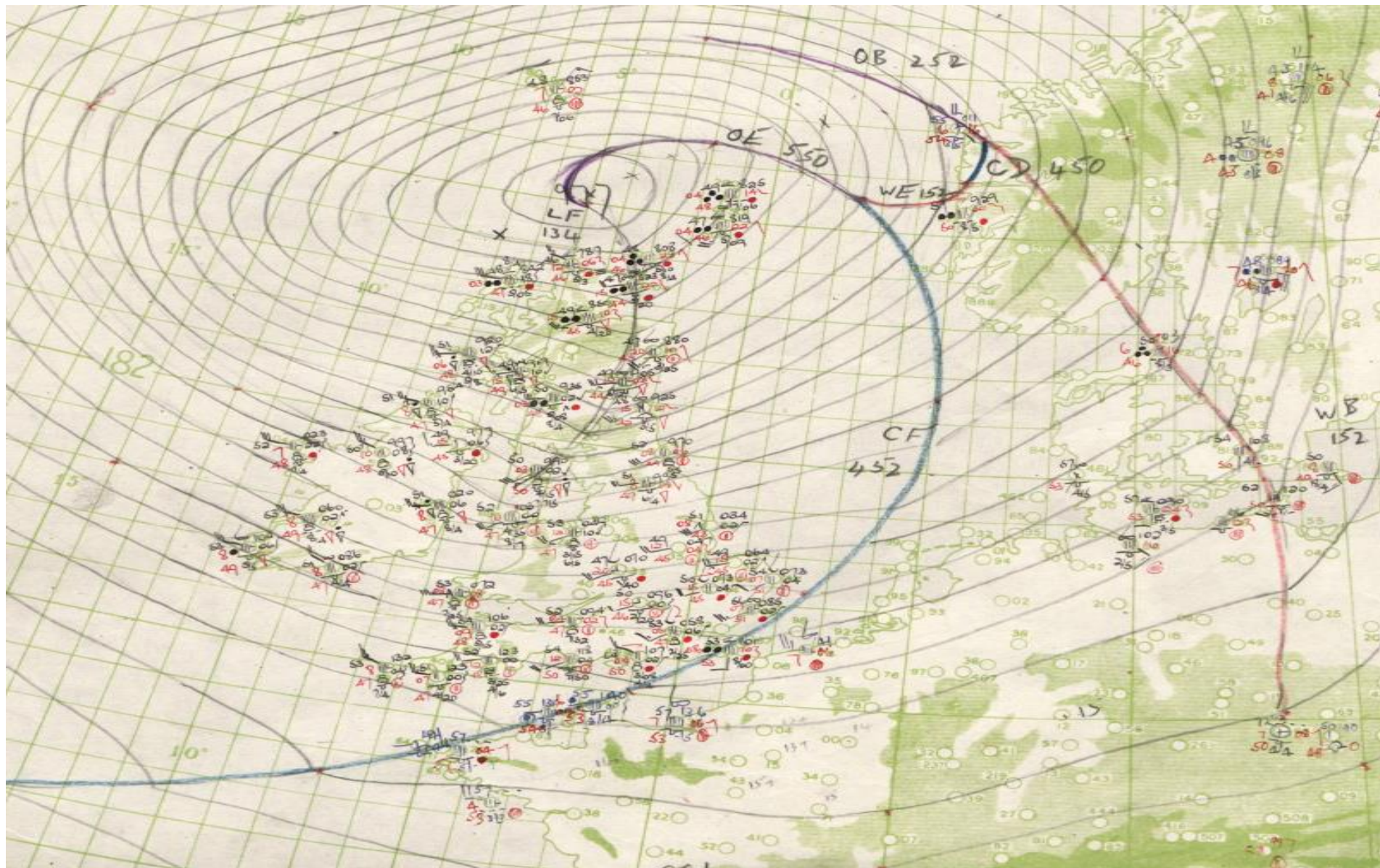
\*I certify that the entries on this sheet are true copies of the corresponding entries on the copies of Form 7440 filed at the station.

(Signature) P. J. ...

\*Delete whichever does not apply.



AIR MINISTRY, METEOROLOGICAL OFFICE.  
 SUNDAY JUNE 4<sup>th</sup> 1944 at 0700hrs. G.M.T.



AIR MINISTRY, METEOROLOGICAL OFFICE.

MONDAY 5<sup>th</sup> JUNE 1944 0100 hrs. G.M.T.



Mr & Mrs Edward Sweeney (nee Maureen Flavin) of Blacksod Lighthouse and the 1944 D-Day Landings





Belmullet Staff List		Arrival	Departure	Destination					
					17	Tony Greene	03/04/1966	10/03/1968	
Start Up	14/9/1956				18	John Fox	08/06/1967	20/07/1970	HQ
1	Frank Meenan O/C	07/05/1956	04/02/1959		19	Jim Neary	21/06/1967	14/07/1971	Dublin Airp
2	Gerry McDonald 1st Obs	14/09/1956	04/04/1961	HQ	20	Bill Dalton	21/06/1967	14/07/1971	HQ
3	Tom Nolan	16/09/1956	04/10/1956	Resigned	21	Des Newman	06/03/1968	04/10/1968	Dublin Airp
4	Louis Power	19/09/1956	23/10/1956	HQ	22	Brian Horan	15/7/1970	Jan 2000 Retired	R.I.P 17/7/
5	Hugh O' Regan	02/10/1956	30/07/1958		23	Tom Barry	30/06/1971	14/01/1972	
6	Dermot Hearne	18/10/1956	06/05/1960	Rosslare	24	Michael McCarthy	30/06/1971	15/06/1974	Shannon
7	Michael Kavanagh O/C	31/10/1956	23/11/2000	Retired	25	Tony Butler	01/02/1972	21/04/1972	
8	Tom O'Kelly	02/08/1958	11/07/1961	HQ	26	Paul Halton	12/04/1972	17/06/1975	Cl
9	Marty Brennan O/C	03/02/1959	12/05/1960	Valentia	27	Donal Shine O/C	12/04/1972	30/05/2014	Ri
10	Alan Nolan	04/05/1960	18/07/1967	Claremorris	28	Mick Hopkins	05/06/1974	15/12/1975	M
11	Ned Walsh O/C	07/05/1960	03/05/1961	Claremorris	29	John O'Flanagan	04/06/1975	28/03/1978	G
12	Mick Sexton	28/03/1961	10/06/1965	HQ	30	Noel Fitzpatrick	13/02/1976	23/03/1976	I
13	Jim Nolan O/C	02/05/1961	11/07/1987	Retired	31	Robert Slattery	29/07/1976	26/03/1979	V
14	Pascal Marrinan	11/07/1961	07/02/1966		32	Columba Creamer	03/10/1978	18/04/1983	Di
15	Adrian Hunt	31/01/1965	15/06/1967	HQ	33	Liam Keegan	05/01/1979	10/09/1979	I
16	Tom Hunt	27/10/1956	03/04/1966	Dublin Airpor	34	Mick Spillane	14/09/1979	16/06/1980	Di

35	Peter Lennon	27/05/1980	29/10/1980	HQ
36	Edel Hart	02/09/1980	28/05/1981	HQ
37	Aidan Murphy	20/10/1980	17/11/1980	
38	Joe Guven	05/01/1981	07/03/1981	HQ
39	James Brennan	17/02/1981	22/04/1981	HQ
40	Hugh Daly	22/04/1981	27/02/1984	Dublin Airpor
41	John Hanley *	06/04/1983		
42	Brian Doyle	14/02/1984	10/07/1986	Dublin Airport
43	Kevin Donnelly * Last Obs	01/07/1986		
44	Gerry Hetherton	07/07/1987	04/07/1988	Casement
45	Shay McLoughlin	01/07/1988	15/10/1990	HQ
46	Willie Byrne	05/03/1991	01/08/2014	Retired
47	PJ O'Regan	05/03/1991	07/10/1998	Cork Airport
48	Brian O'Shea	05/01/2000	10/08/2012	Knock Airport
49	S J O'Byrne	01/08/2001	02/04/2007	Casement
50	Conor Lally	6/6/2007	31/08/2012	Shannon

End of manned observations 8/8/2012

50 Staff in 55.9 years

## Claremorris staff.. 1943----1995

First staff in Claremorris

1940s ...P.J. Vahey, R. Vahey, J, Vahey, Imelda Vahey P. Vahey

1950s..... C O Cathain, P.J. Cotter , M.T .Neilan, S. Hickey, D O Regan T .Reynolds , J Kelly , T. Moore, J .Malone

D.S O Brian. J Kerins, W. Ryan, O .Kelly, J Horgan, R Leneghan, L. Power. , P .Coen, C. P. O h Aoda, F. O Briain

D. Newman, W. Long, M. Mac Fearaith , , D. O Loughlin

J.Dempsey,

1960s/ 90s.... N. Walsh, S. De Faoite, T. Nolan, F. Mc Cord, P. Lacy. M. Walsh, T. Lally, P Marrinan, D. Barry, J. Donlon, M. Harte,,.... D O "Mahony. N. O Keeffe. S Kearney, S.J. Hoyer.

Treacy, A. Nolan, S. Hennigan, Anne Clifton, W.P. Byrne, B. Horan, F. Clabby,

Last Staff before closure 1995

L. Newman, D. Middleton,

A. Clohessy, S Mc Grenra, M. Pierce M.Haverty